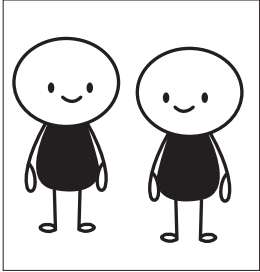


NUD

exclusive

EPICO ASSEMBLING INSTRUCTIONS



1. The lamp takes two persons to mount.



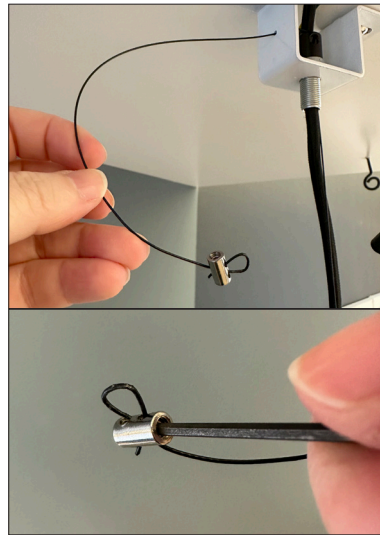
2. Carefully pull out the styrofoam box.



3. Start with the ceiling cup. Unscrew the black nut and detach the white metal bracket inside.



4. Mount the white bracket in the ceiling. Make sure the glass lid is hold safely meanwhile. Fasten the bracket securely to hold the weight of the glass lamp. If the enclosed screws is not fitted for your ceiling use other screws that are qualified.



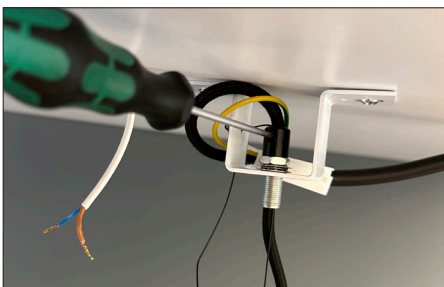
5. When the bracket is fasten it is time to adjust the length. Start with the wire.



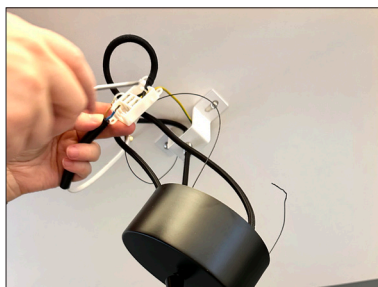
Use a hex key to open the wire lock, on both sides. Adjust the length of the wire to satisfaction and than tighten it securely in the right height.



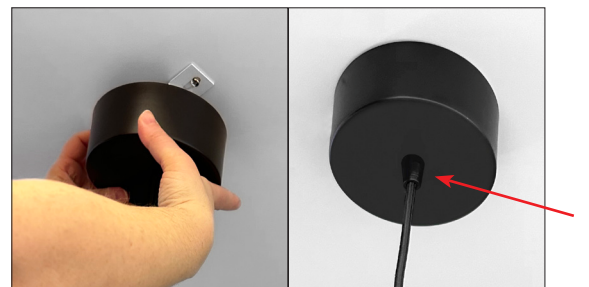
6. When the wire is securely tighten the glass lid can hang by itself while adjusting the rest.



8. Loosen the cord grip and pull up all loose cable through it. When the cord is hanging nice and straight tighten the cord grip again.



9. Now it's time to connect the electricity. Use a qualified installer if needed.



10. Fit the left over cord and wire into the canopy. Thread the canopy over the center tube. Attach the black metal nut to the threaded center tube.



12. Now the lamp should be hanging like this, in the desired length.



13. It's time to put in your light source. Could be a good idea to test that it's working before mounting the big glass.



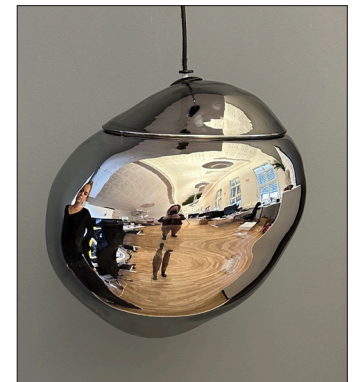
14. Carefully pull up the metal covers and the glass lid to uncover the acrylic disc.



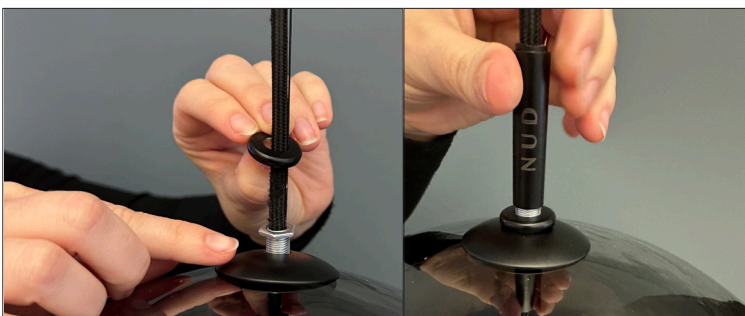
15. Put on the big glass by using the gap in the acrylic disc. Make sure you fit it correctly with the three acrylic posts.



16. Adjust the disc gap in different directions for various hanging results.



17. Then you carefully put on the lid by turning it around to find the right position.



18. Fasten the lid to the big glass by the little metallic screw-nut and cover it with the black small cover. Finish with putting on the threaded black tube cover with the NUD-logo.



**Congratulations
you now have
the unique ROCK
EPICO installed**

If you have questions or concerns please contact info@nudcollection.com

If you need to see any details closer please download this instruction as a pdf. You'll find it in the download section under the product description:

<https://www.nudcollection.com/collection/nud-exclusive/rock-epico-smoke/>